



TRADE

Level 4 Course Outline

The in-depth training provided by this qualification provides the ideal basis for advancing in all turf industry sectors, and is a must for everyone wanting to pursue a career path in the sports turf industry. It involves a comprehensive training programme designed to be completed over a three and a half year period.

The National Certificate in Sports Turf Management (Level 4) is the 'supervisory tradespersons' or 'apprenticeship' level qualification in the sports turf industry. This qualification provides a thorough grounding in the theoretical and practical skills necessary to manage sports turf up to supervisory level. These range from using and servicing sports turf equipment and the theory and practice of turf management, to supervising staff and managing budgets. Training encompasses turf management requirements of all major sports turf surfaces.

The programme is recognised by the New Zealand Qualification Authority, and incorporates training in sports fields, golf, bowls and cricket grounds. It is designed to provide portability across turf sectors to enhance opportunities to qualified sports turf managers. Trainees can enrol into the qualification at any time.



Trainees will learn the qualification by;

Correspondence: Trainees will complete a distance learning programme through the Open Polytechnic.

On-jobs: Trainees will have a registered ITO Workplace Assessor who will be responsible for assessing their competency for the on-job skills.

Block Course: Trainees will attend three block courses, one per stage. Each block course will provide excellent interactive learning delivered by experienced sports turf agronomists from the NZ Sports Turf Institute.



Learning support: Following completion of particular workshops, trainees can log on to the internet (e-learning) to access resources designed to improve understanding of specific 'technical' subjects.

How much?

This programme is \$1,602 excl. GST. Trainees will be invoiced \$534 excl. GST at the beginning of each stage.

Course Content

Stage 1

- Maintain hand tools and service small engines
- Use turf machinery and equipment
- Soil properties and fertilisers
- Mowing turf areas
- Requirements of turf surfaces
- Tractor safety, and drive a tractor
- Turf botany
- Monitoring weather
- Petrol and diesel engines



Stage 2

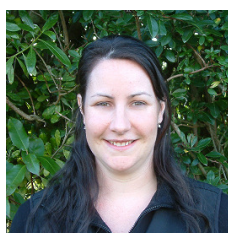
- Soil water management
- Identify common pests, weeds and diseases
- Fertiliser areas
- Establish a turf surface
- Irrigate
- Nutrients required for turf

Stage 3

- Survey turf areas
- Drainage
- Control common pests, weeds and diseases
- Maintain a turf surface
- Supervise staff
- Prepare a budget
- Upgrading turf root zones
- Calibration
- Agrichemicals
- Plan a fertiliser programme



Contact Details



For further information about the National Certificate in Sports Turf Management Level 4, please contact:

Jeanette Salmund: Training Co-ordinator
NZ Sports Turf ITO
Email: jsalmond@nzstito.org.nz
Ph: 06 355 7029